



*apomare*

# Cantieri di Pisa 102ft (2008)



# Cantieri di Pisa 102ft (2008)

*cantieri di pisa*



**3.950.000 EURO**













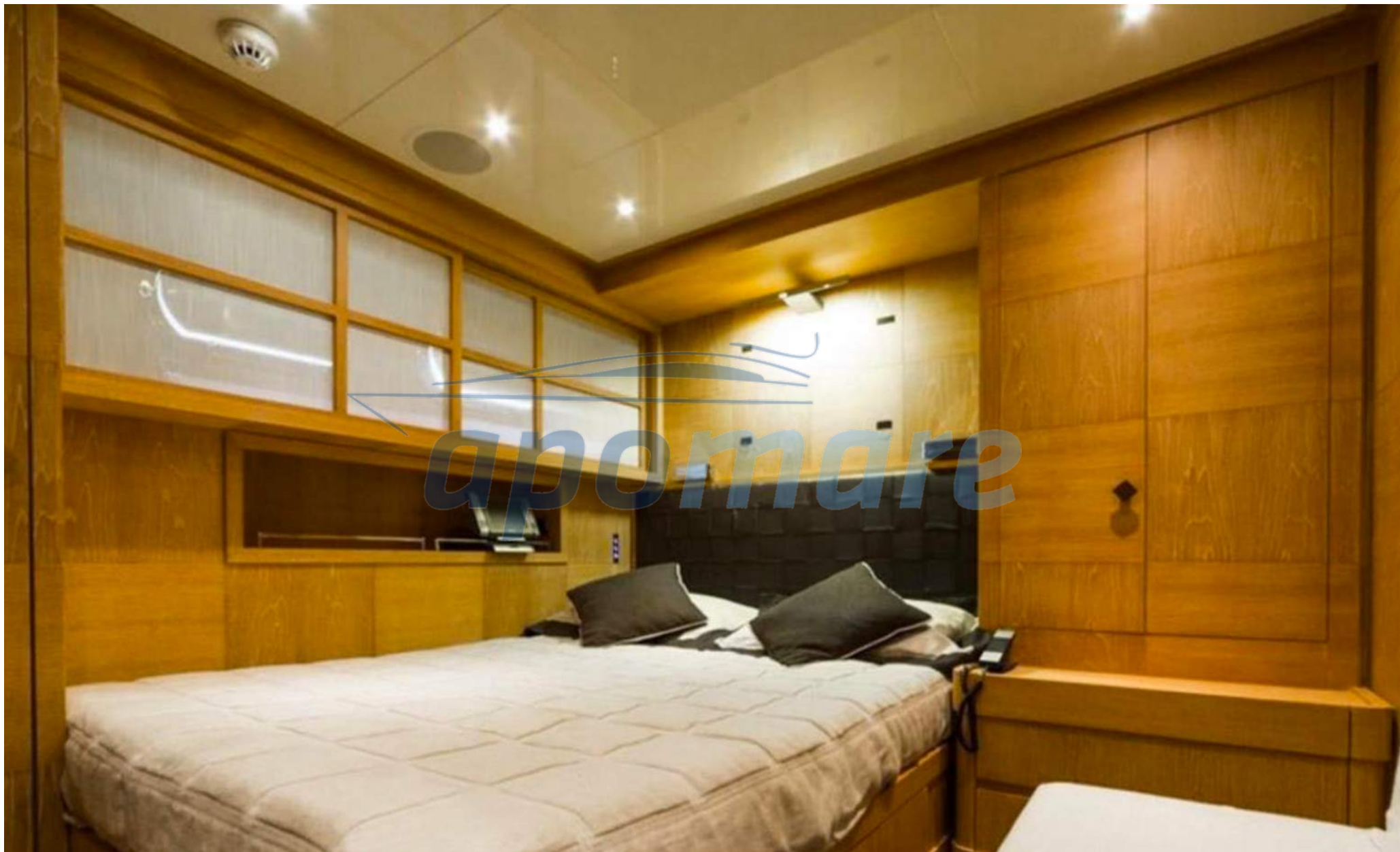




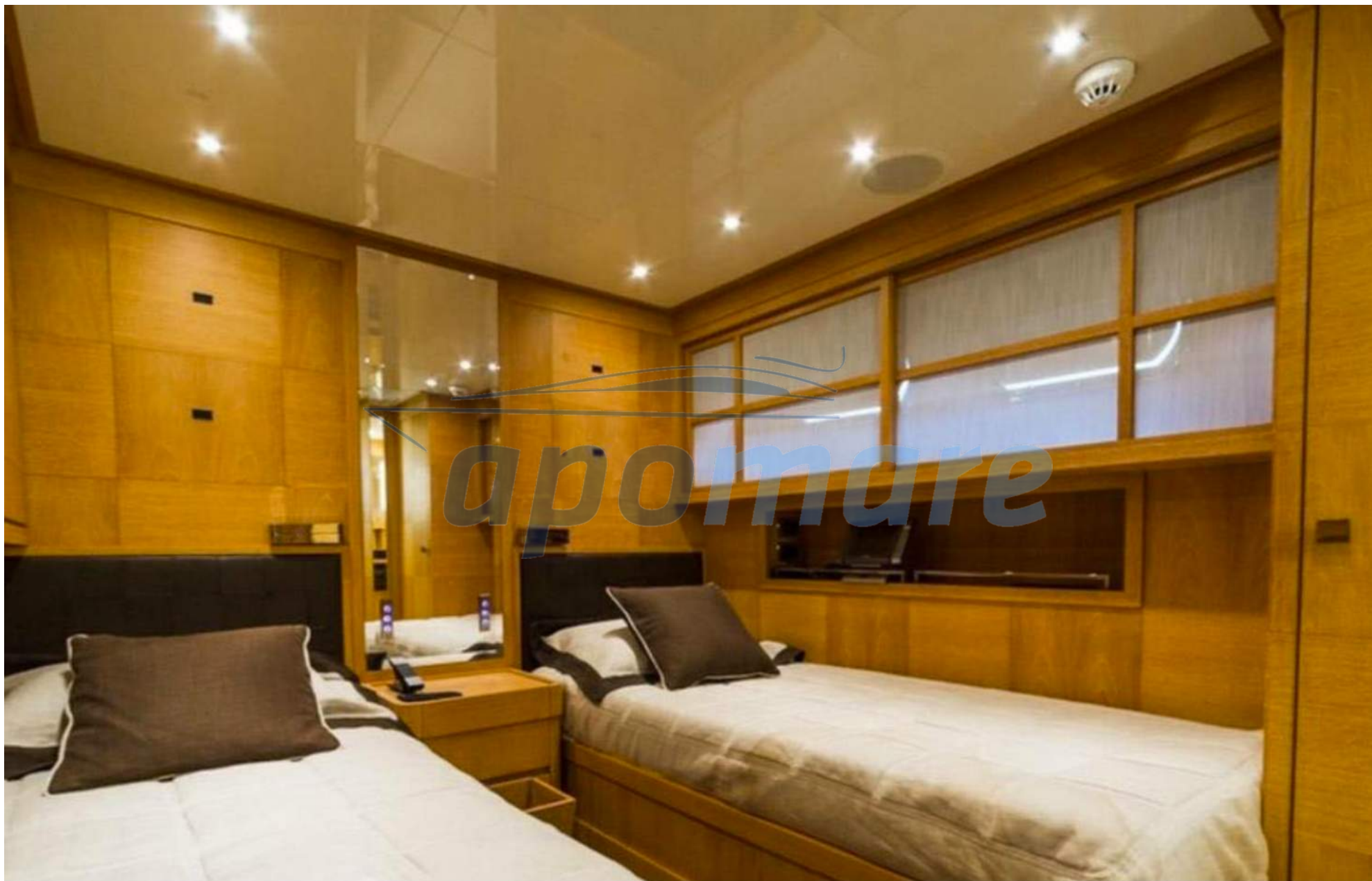


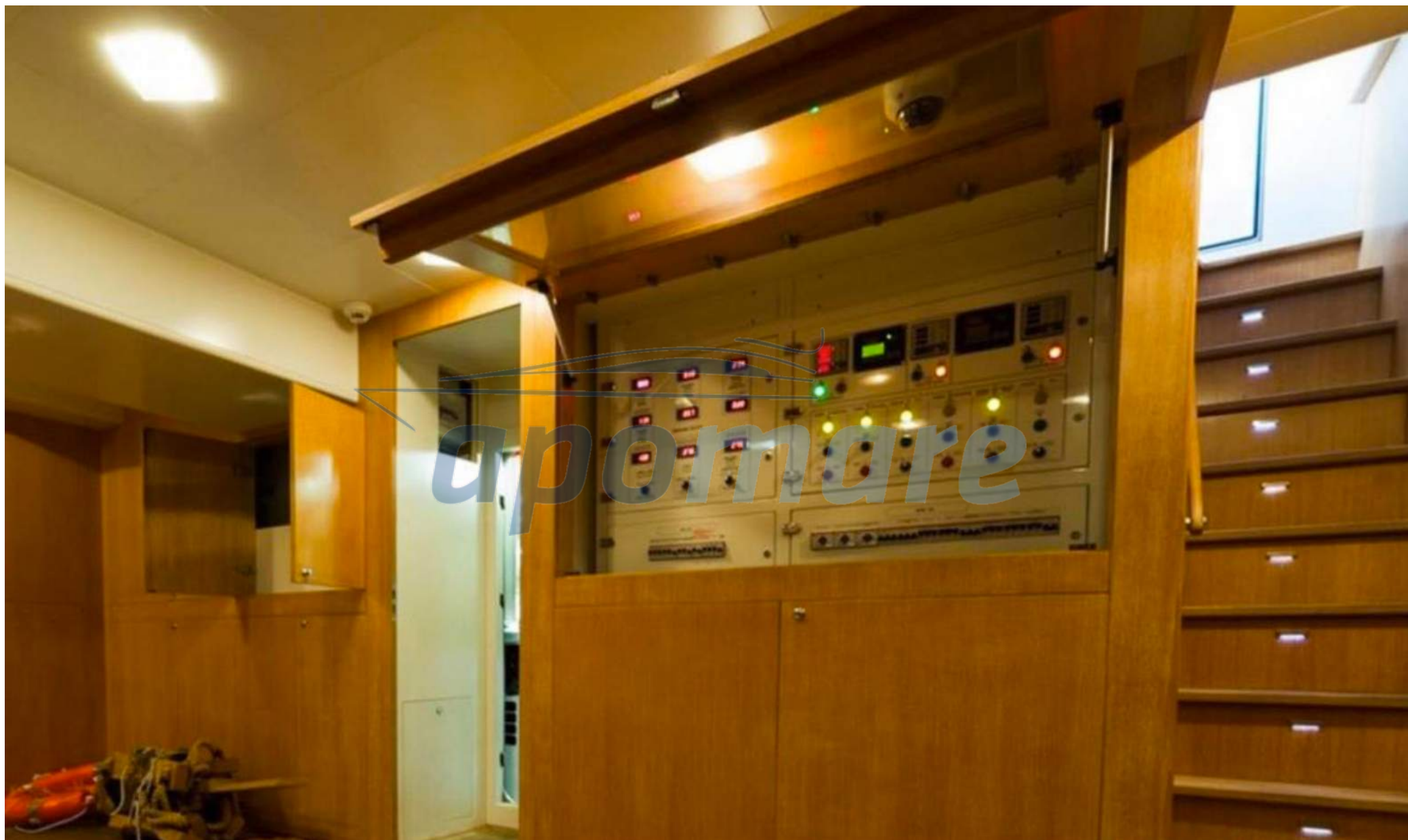


















Diesel engine tender,  
No petrol tanks stowed inside

31,10M/ 102'

## SPECIFICATIONS

BUILDER	CANTIERI DI PISA
BUILT/REFIT	2008
LENGTH: (M/FT)	31,10M/ 102'
BEAM (M/FT)	7,20M/ 23'07"
DRAFT (M/FT)	1,90M/ 6'03"
HULL MATERIAL	GRP
STATEROOMS	5
GUEST	10
CREW	5
CRUISING SPEED	20 KNOTS / 25 MAX

## BASIC DETAILS

Type	Akhir 105	
Builder	Cantieri di Pisa	
Year	2008	
LOA	31,10m	102'
LWL	25,30m	83'
Beam	7,20m	23'7"
Draft	1,90m	6'3"
Hull Material	GRP	
Superstructure	GRP	
Decks	Teak	
Flag	UK	
Classification	Rina	
Main Engines	2 x MTU 16V2000M93	
Max Speed	25 knots	
Cruising Speed	20 knots	
Range	900nm	
Stabilizers	TRAC	
Gross Tonnage	195 tons	
Guest Accommodation	10 guests in 5 staterooms	
Crew Accommodation	5 crew in 3 cabins	

## CONSTRUCTION

Hull	GRP
Superstructure	GRP
Decks	Teak
Paint	Awlgrip

## CAPACITIES

Fuel Capacity	17,300 Litres	4,570 US Gallons
Water Capacity	3,000 Litres	793 US Gallons
Lube Oil	250 Litres	66 US Gallons
Waste Oil	120 Litres	32 US Gallons
Waste Water	800 Litres	211 US Gallons



## MAIN MACHINERY

Main Engines	2 x MTU 16V2000M93
Engine hours	Starboard: 408 hrs January 2020 Port: 399 hrs January 2020
Gear Boxes	ZF 3060 A
Shafting	Marinox 110mm
Propellers	DETRA 4 blades, D=1120mm, P=1.305mm

## Generators & Electricity

Output	230V 24V 12V 50Hz
Generators	2 x ONAN 40 OMDDCD Starboard: 811 hrs January 2020 Port: 936 hrs January 2020
Shore Power	230V
Output volts 400 output amps	2 x Gel 210 Amp 24V
Batteries	8 x Gel 700 Amp
Generator Start	4 x Gel 210 Amp 24V 4 x Gel 210 Amp 24V

## ANCILLARY MACHINERY

Air Conditioning	CONDARIA WM-S/FCL 60004
Air Compressor	11 hrs
Bow Thruster / Stern Thruster	Hydrosystem BT 60S/ Hydrosystem BT 40S
Fresh Water Filters	Yes
Fresh Water Heaters	2 x GIANNESCHI 100 litres 3 kW triple phase
Fresh Water Maker	IDROMAR Duplex
Fresh Water Pressure System	IDROMAR
Fuel Separator	SEPAR
Fuel Filters	RACOR
Oily Water Separator	SEPAR
Oil Pumps	Yes
Sewage Treatment System	HAMMAN
Toilet System	TECMA
Stabilizers	TRAC
Water maker	IDROMAR 120 l./h

## DECK MACHINERY & EQUIPMENT

Anchors	2 x Posidonia 145 kg each
Anchor Chains	2 x 125 m 14 mm
Anchor Windlass System	MAXWELL 4,5 kW
Aft Warping Capstans	2 x MAXWELL 4 kW
Boat Crane	OPACMARE
Passarelle	Electrohydraulic

## SECURITY, FIRE FIGHTING & SAFETY EQUIPMENT

Security Equipment	
CCTV	3 x Cameras: cockpit, garage, and engine room
Ship's Safe	Yes
Fire Fighting Equipment	Fixed CO2 system and sea firefighting with hose fittings
Fire Control System	Yes
Alarms	Yes
Safety Equipment	
Life Rafts	2
EPIRBS	Yes
Flares	Yes
Medical Equipment	Yes

## NAVIGATION EQUIPMENT

<u>Navigation Systems</u>	
Radar	FURUNO
Gyrocompass	SIMRAD
Magnetic Compass	SIMRAD
Auto Pilot	SIMRAD
Depth Sounder	SIMRAD
Video Sounder	FURUNO
GPS	FURUNO
Ships Computer	FURUNO
Laser Plotter	FURUNO TZTL
Wind Indicator Station	SIMRAD
Speed Indicator	SIMRAD
Navtex	FURUNO

## WORK LIST 2019

Furuno multifunction TZT2BB Black Box

Furuno multifunction TZT212F

New antena radar DRS4D\_NXT with 30m new cable

Radar Furuno DRS6A-NXT with new antenna and 30m new cable

New control keyboards MCU-005

New bronze transducer 520-5MSD

New charts Sud Europe

New compass Furuno SC 33 with T connection and new 16m cable NMEA 2000

## TENDER

New Tender EXT 560 with Yamaha 40 Cv 2019





[www.apomare.com](http://www.apomare.com)

[info@apomare.com](mailto:info@apomare.com)

+90(532) 211 50 05