



apomare

Benetti Sail Division (2009)



2.999.000 Euro

























































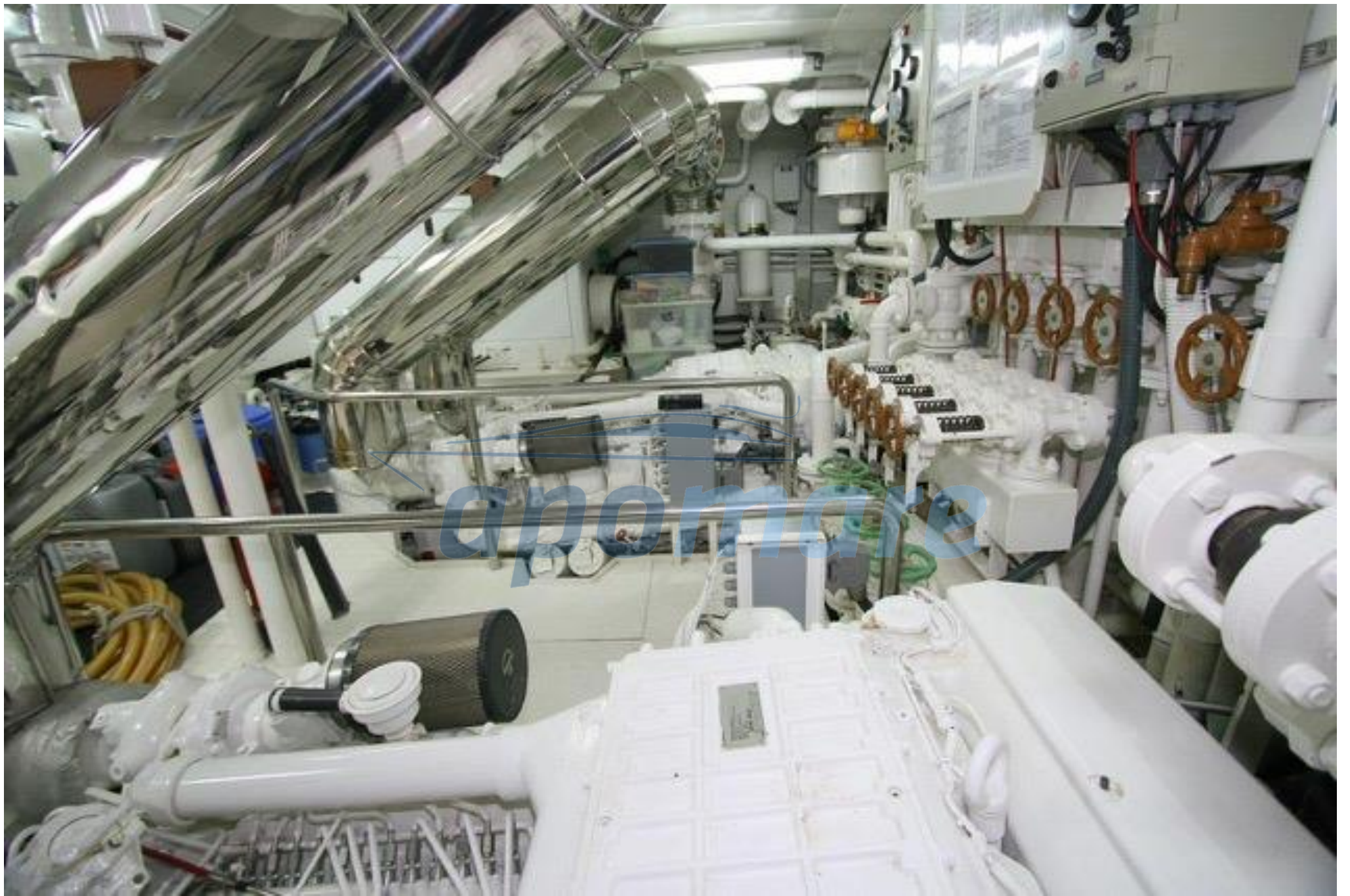














**An elegant, special construction Sail Division 95 with hard top, blue hull and no lateral 'fashion plates'.
Her clean exterior lines are carried into the contemporary light wood interior.**

**Up to 10 guests in spacious main deck master cabin then VIP and two twin cabins with
pull-man berths on the lower deck. A perfect displacement cruising yacht with a clever layout.**

**Top specification including de-rated engines, 3 generators, zero speed stabilizers, commercial
specification navigation equipment, redundancy on much equipment and multiple corrosion
protection systems.**

**Possibly the only Benetti Sail Division built to Lloyds Class and maintained, 100 A1 SSC Yacht
Mono G6 + LMC.**

Berth available near Barcelona with kit storage facility.

Additional Specs, Equipment and Information:

Dimensions

LOA: 28.95 m Beam: 2.5 m

Engines and Technical Information

2 x MAN D2842 LE 800 engines of 800 hp each (1100 hours @ May 2018)

Hydraulic PTOs on both main engines

Hydraulic PTOs on both main generator

Fuel Capacity: 36000 litres

Water Capacity: 5300 litres

Accommodation

Bright and contemporary interior with light woodwork in satin finish. Grey fabric sofas, cream carpets and light fabrics.

Spacious saloon and dining area communicating with galley going forward to port, accommodation to starboard and rear stairs to VIP and engine space.

Accommodation for up to 10 guests in master cabin on main deck, VIP aft on lower deck and two twin
cabins with pullman berths, also on lower deck, all ensuite.

Electric automatic saloon doors to aft deck

Large hull windows to saloon

Day head on main deck

China crockery set and silver cutlery

Condaria G2E140-N538-01 air conditioning to whole boat

3 x large hot water boilers

Navigation and Electronics

Raised pilthouse design with twin navigators chairs and comprehensive commercial specification electronics.

Command station to starboard of flybridge with twin repeater screens.

Electric-hydraulic steering, electronic engine controls and hydraulic bow and stern thrusters make manoeuvring a pleasure.

STABILIZERS - TRAC 370 working under way and at zero speed.

Siemens Simatic touch screen on board systems control

Bondioli y Pavesi M4MF50 _ 50 3BP/N bow & stern thrusters

Furuno ERT-6/10N Sounder

B&G H3000 tridata

Furuno NX-700A Navtex

Blu Mf/Hf Salior System 5000

VHF Sailor RT5022

VHF Simrad RS87

3 x VHF Icom IC-M87

2 x VHF solas Saracom TW _ 50

AIS Saab R4

ARC Globalfix 406 RBL 35 EPIRB

Thrane&Thrane Sailor FBB-500 Satphone

2 x Furuno FAR _ 2117 Radar

Sart Serpe _ IESM Kannard rescuer

2 x Furuno Gp _ 150 GPS

2 x Furuno _ transas ES-4 transas WF39 Plotters

Anchtuz STD-22/110-233 giroscope

2 x Anchutz NP 60 Autopilot

Mitsubishi _ pelco DX-tl 4509 Cctv

Computer Hp Touch smart 310

Computer Hp Pavilion

Samsung Sync Master 22666 BW PC Screen

Printer Hp Officejet 6310

Electrical Systems

2 x Kohler 33 kW generators (1100h & 1100h @ May 2018)

1 x Kohler 11 kW generator (250h @ May 2018)

4 x Victron SKYLLA _ TG 24v _ 100 Amp Chargers

3 x Victron Quatro 24/5000/120 Converters

12 x Masterball 2V _ 1643 A Batteries

Entertainment Equipment

Seatel Sat Antenna

Home entertainment REVOX-Kaleidoscope Saloon

Panasonic 50" TV to saloon

Loewe TV Owners cabin

Loewe TV VIP cabin

Loewe 20" TV to guest cabins

Loewe 20" TV Crew and Captain cabins

Galley and Laundry

Spacious and well appointed galley with access to saloon, door to side deck and crew area forward.

Hard waring Corian work tops and flooring, wooden fronts to cupboards and stainless steel appliances.

2 x Siemens Microwaves _ Galley and Crew

Nespresso Coffee Machine

Large Siemens Fridge

Large Siemens Freezer

Siemens Oven (wide)

Siemens full size Dishwasher

SYP Extractor Fan

Siemens Ceramic Hob (wide)

Fraivin Wine Cooler

Siemens Fridge _ Crew Area

Siemens Freezer _ Crew Area

MacFran Ice Maker Fry

Siemens Fridge Fly

Siemens Washing Machine

Siemens Drying Machine

Deck and Tenders

Quality teak decking to all exterior spaces and in good condition.

Besenzoni Bes 2528 _ 600 kgs Crane

High bulwark around lower deck

Besenzoni 300kgs Paserelle

2 x Maxwell 4500 Stainless steel anchor winches with capstans

2 x Maxwell electric aft mooring capstans VC 3000

Large hard top to flybridge

No 'Fashion Plates' to side decks giving clean lines

Transom gate

Port & starboard side boarding gates with hydraulic side ladder &
platforms

Tender Novurania 430 DL 7-pax Tender

Jetski Yamaha F50 FETL-EFI 50cv _ 4T engine

Safety Equipment

Medicine Cabinet

Towing Line

2 x SOLAS Life Rafts (16 pax)

4 x Life Rings

20 x Life Jackets

Fire Extinguisher System

21 x Fire Extinguishers

Motobomba Lombardini

2 x Fire hoses

Siemens Switchboard

Siemens Digital Alarm Panel

Additional Information

2 x water makers

Forward facing seating on the bow & free standing sun loungers

Large sunbathing pad to aft of flybridge

Flybrige bar unit to port incorporating fridge, freezer, sink and grill

Deck wask system

Covers

Disclaimer

The Company offers the details of this vessel in good faith but cannot guarantee or warrant the accuracy of this information nor warrant the condition of the vessel. A buyer should instruct his agents, or his surveyors, to investigate such details as the buyer desires validated. This vessel is offered subject to prior sale, price change, or withdrawal without notice.



www.apomare.com

info@apomare.com

+90(532) 211 50 05